

COEUR D'ALENE WINDOW CO.

THREE TRACK DOOR INSTALLATION INSTRUCTIONS



Model 6832

Revised 8/29/2022

ITEM CHECKLIST



- ☐ Main Frame (4 pcs)
- ☐ Sashes (3 pcs)
- ☐ Pocket Covers (4 pcs)
- ☐ Aluminum Thresholds (2 pcs)
- ☐ Aluminum Slider Tracks (2 pcs)
- ☐ Fixed Panel Spacers (2 pcs)
- ☐ Fixed Panel Setting Block
- ☐ Handle Kit
- ☐ Keeper
- ☐ Bag of fasteners
- ☐ Sill Pan
- ☐ Sill Pan Corners
- ☐ Paint Pen (for painted product)

Main Frame



Sash



Pocket Cover



Alum Threshold



Alum Slider Track



Fixed Panel Spacer



Fixed Panel Setting Block



Handle Kit



Keeper



Sill Pan



Sill Pan Corner

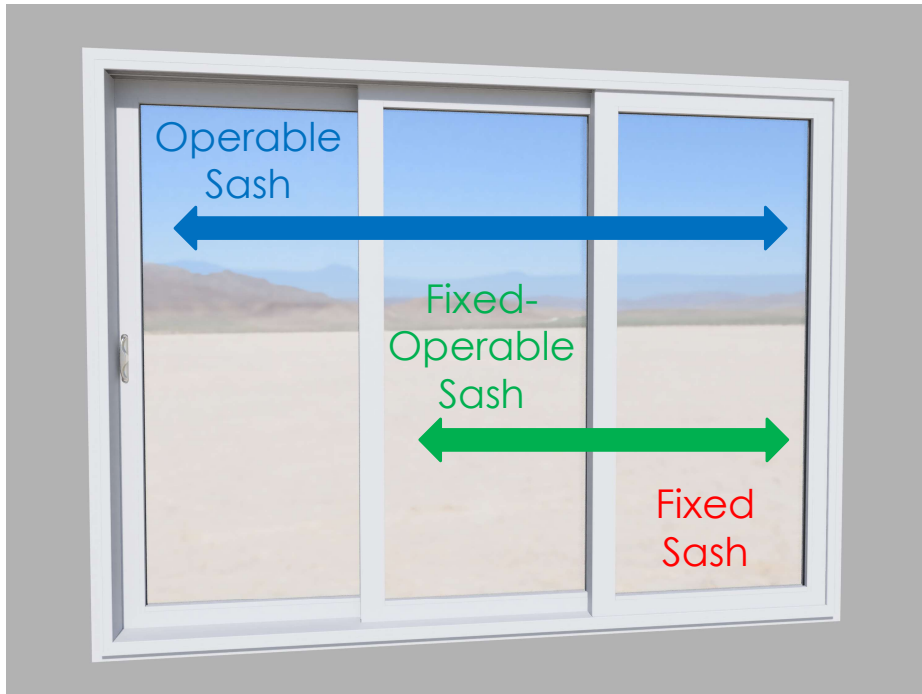


Paint Pen

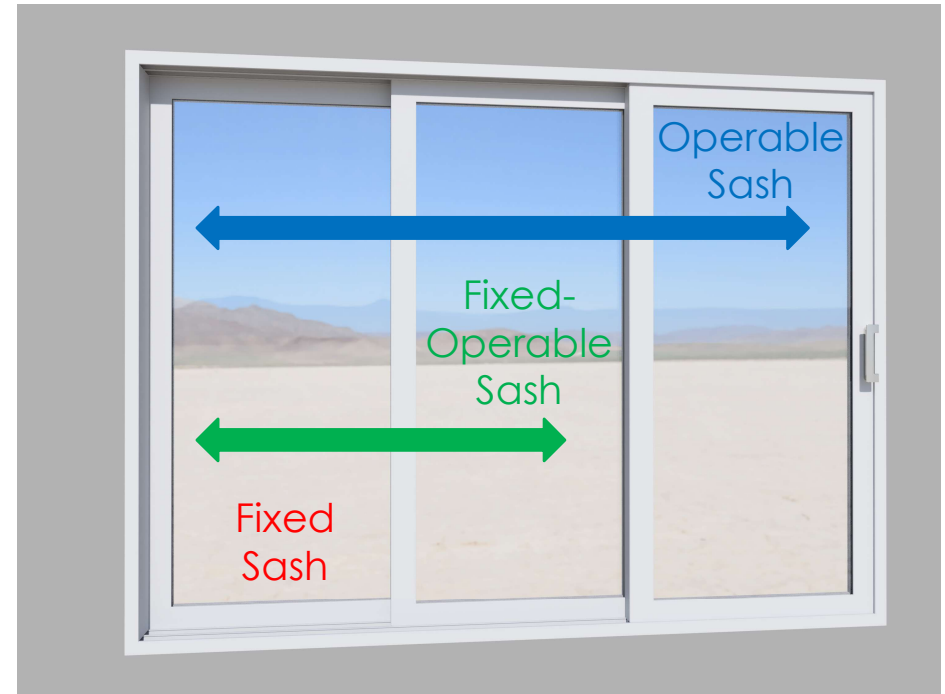


INTRODUCTION

Exterior View



Interior View



This model has 3 sashes. The operable sash can operate/slide the entire width of the window. The fixed-operable sash is intended to open only partially, and the fixed panel is to remain in place.

Step 1) Unwrap and set up the four frame pieces on an elevated surface like sawhorses (Fig. 1a-b). Notched frame pieces will be the sides (Fig. 1c). The frame piece with weep holes will be the bottom, and the remaining frame piece will be the top (Fig 1d).

Fig. 1a



Fig. 1b



Fig. 1c

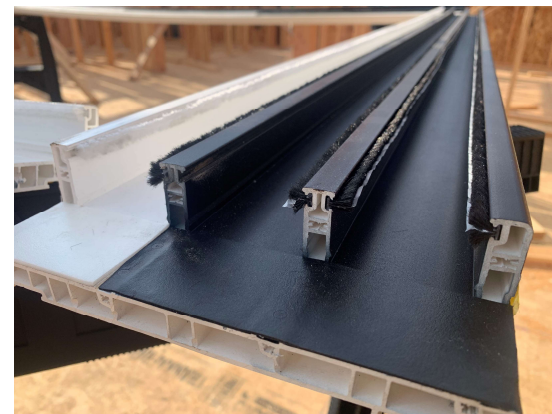


Fig. 1d



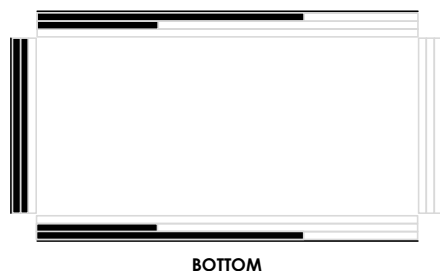
Special note for painted product: Configure the frame pieces as shown below. Orientation of frame pieces will depend on which direction the door operates.



Standing from the outside looking in, if the door slides right-to-left (known as OXX) arrange painted frame pieces as shown



Standing from the outside looking in, if the door slides left-to-right (known as XXO) arrange painted frame pieces as shown



Step 2) Check that the foam gaskets on all side frame pieces are present and flush with the edge of the frame. Ensure that weatherstrip is present in all tracks, flush with the edge of each track (Fig. 2a)

Painted product will have black and white gaskets and weatherstrip. Check that the color of each aligns with the sections of frame that are painted (Fig. 2b-c).

Fig. 2a



Fig. 2b

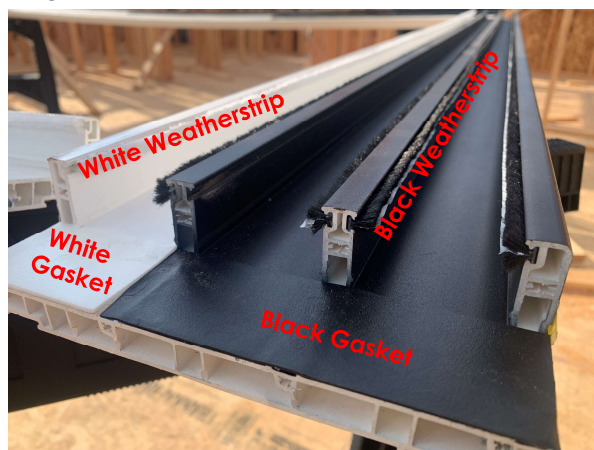


Fig. 2c



Step 3) Seal both ends of all four frame pieces as shown with a high-quality sealant. Ensure that all necessary edges of the profile (shown with **red lines** below) are covered with at least a 1/8" bead of sealant.

Fig. 3a



Fig. 3b



Fig. 3c

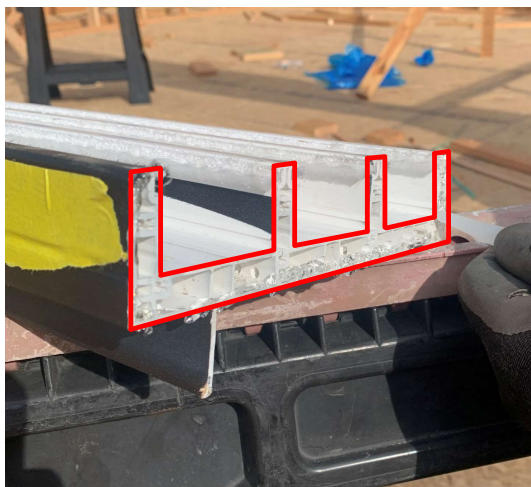


Fig. 3d



Step 4) Place the ends of two frame pieces together as shown (Fig. 4a). Ensure faces are flush and even (Fig. 4b). Use eight of the provided fasteners w/ washers (Fig. 4c) to secure the frame pieces together through the predrilled pilot holes (Fig. 4d). Rubber washers should be partially compressed (Fig. 4e). Over or under-torqued fasteners can cause leaks. Repeat this step with all four corners.

Fig. 4a



Fig. 4b



Fig. 4c



Fig. 4d



Fig. 4e



Step 5) Clean off any excess sealant that may have become exposed from the previous step (Fig. 5a-b). Inspect the seams at each corner, applying additional sealant on seams that may have been missed (Fig 5c-d).

Fig. 5a



Fig. 5b



Fig. 5c



Fig. 5d



Step 7) Apply flashing tape as shown to fill in the gap between nail fins in all 4 corners as shown.

Fig. 7a



Fig. 7b



Fig. 7c



Step 8) Prepare the rough opening for install. Check dimensions, square, level, and plumb. Shims may be used to level the opening. Opening should be $\frac{1}{2}$ " bigger than the frame size.

Step 9) It is recommended to apply flashing tape to the sill before the sill pan is applied to add an additional layer of protection from water and condensation.

Fig. 8a



Fig. 9a



Fig. 9b



Flashing tape applied to
bottom of the opening

Step 10) Apply a 3/8" bead of sealant on the edge of the flashing tape. This will create a seal underneath the sill pan.

Step 11) ***It is highly recommended to use a sill pan, especially with KD (knockdown) doors.*** Insert sill pan corners into the bottom corners of the rough opening. Run a bead of sealant along the top of the sill pan corner as shown.

Fig. 10-11a



Fig. 10-11b



Step 12) Lay the center sill pan into the opening and ensure that the center sill pan is overlapping the sill pan corners. Check that the sill pan is level after install.

Step 13) Apply a 3/8" bead of sealant to the front surface of the sill pan. At each end and in the middle, leave a 2" gap in the sealant as shown to allow water to escape in the event of a leak.

Fig. 12a



Fig. 12b



Fig. 12c



Bead of sealant along front surface of sill pan w/ 2" gaps at both ends and in the middle.



Step 14) Lay a final 3/8" bead of sealant on the exterior wall close to the opening.

Note: Ensure Tyvek is rolled back before applying sealant.



Step 15) Set the frame into the opening. Make sure the weep holes are on the bottom.

Level, plumb, and square the frame. Check inside and outside dimensions. This step is crucial, failure can result in operational restrictions.

Fig. 14a



Fig. 15a



Fig. 15b



Fig. 15c



Step 16) Once frame is properly set, fasten nail flange to wall using every nail hole.

Step 17) Check inside dimensions again, as the frame tends to roll towards the interior. Extra fasteners can be used to secure the frame through the top only. It is recommended to use a laser level or string line to set the straightness of the frame, inside and out.

Step 18) Determine orientation of door (slide right or slide left).

Step 19) Install fixed panel setting block in exterior sill track as shown.

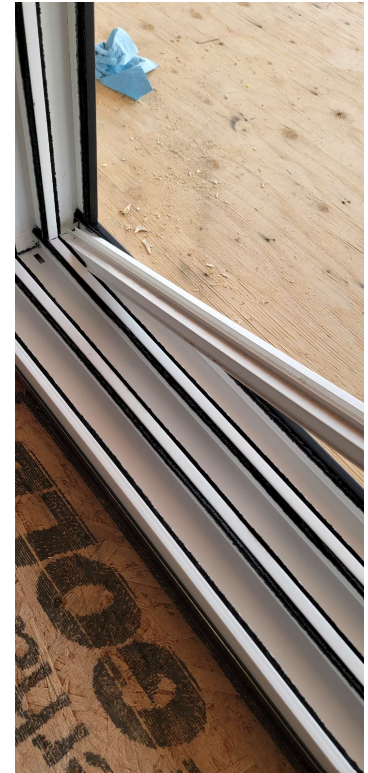
Fig. 17a



Fig. 19a



Fig. 19b



Step 20) Install 2 vertical setting blocks, one in the top and one the bottom of the exterior vertical track as shown.



Step 21) From the exterior, install fixed panel by inserting the top into the track, pushing the panel inwards, then setting the bottom on top of the setting block.

Note: Do not fasten fixed panel yet, this will be done in a later step.

Fig. 20a



Fig. 21a



Fig. 21b



Fig. 21c



Step 22) Install the slider track for the fixed-operable panel (middle panel) into the middle track.

Step 23) Install the slider track for the operable panel (interior panel) into the interior track.

Step 24) Install the fixed operable panel from the interior, similar to the fixed panel. Ensure that the wheels set on the slider track.

Fig. 22-23a



Fig. 22-23b



Step 22)
Slider track
for the fixed-
operable
panel

Step 23)
Slider track
for the
operable
panel

Fig. 24a



Step 25) Install operable panel from the interior, similar to the previous two. Again, ensure that the wheels set on the slider track.



Step 26) Pocket the fixed panel into the frame pocket. Slide the operable panel all the way into the opposite pocket. Check that all panels interlock and pocket properly.

Note: Adjust sash wheels accordingly to make sure the panels are set properly and the verticals align

Fig. 26a



Fig. 26b



Step 27) Secure fixed panel in place by using provided fasteners as shown. Fasteners must be used every 6 inches and be screwed in through the weatherstrip pocket.

Note: Ensure fixed panel is fully pocketed into the frame before fastening it

Fig. 27a



Fig. 27b



Fig. 27c



Fig. 27d



Step 28) Install the fixed panel threshold (longest one) as shown, ensuring that it is flush with fixed panel.

Step 29) Install the fixed-operable threshold as shown, again ensuring that is flush with the fixed-operable panel.

Fig. 28a



Fig. 28b



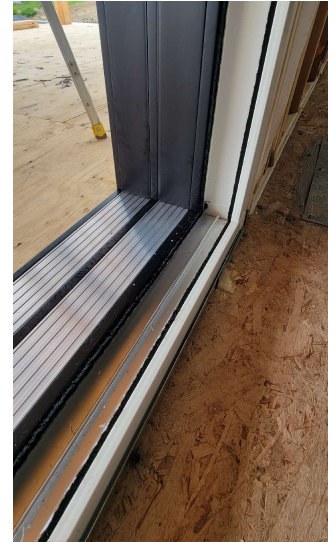
Fig. 29a



Fig. 29b



Fig. 29c



Step 30) Install top pocket filler into exterior track, flush against the fixed panel. Repeat the process for the fixed-operable panel.



Step 31) Install pocket filler into jambs. These should all be the same length. Ensure all pocket fillers are flush with the frame.

Fig. 30a



Fig. 30b

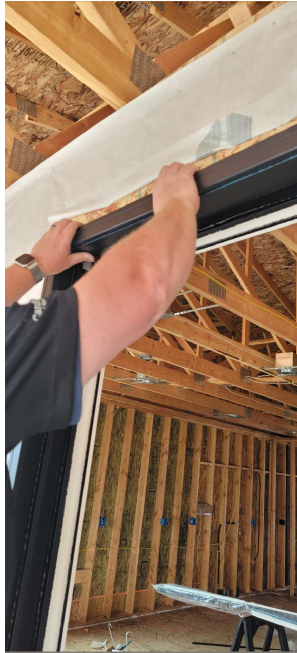


Fig. 30c



Fig. 31a



Fig. 31b



Fig. 31c



Step 32) Install center keeper by aligning it with the pilot holes and fastening it to the frame with all 4 provided screws.



Note: Use shims between door and framing to prevent bow when tightening screws.

Step 33) Install handle per instructions in box. Use a manual screwdriver to install interior handle screws.

Fig. 32a



Fig. 32b

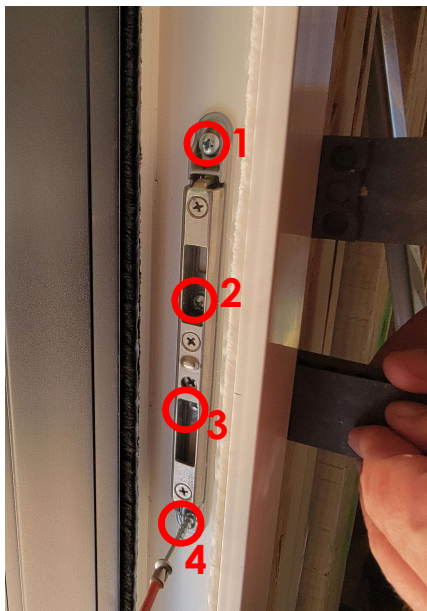


Fig. 33a



Fig. 33b

